



WTC MUD NO. 1
5-YEAR PARK PLAN

Park Workshops: Response Summary

In December 2021, the District hosted four, one-hour-long workshops for five of the District's parks spaces: Old Mill (Gazebo) Park, Aster Pass Park, Hatch Pond, and Volente Hills Park + Cashell Wood Pond.

These five spaces were selected because the Advisory Committee wanted more specific direction on these areas from the residents who live in close proximity to the park space.

The workshops were advertised on the website, through social media, via email (for those residents on the email list for the park planning project), and via door fliers that were hand-delivered to homes in the immediate vicinity of these particular parks. Roughly 250 fliers were delivered.

In-person attendance was modest, but not unexpectedly so considering the narrow focus of each workshop. Three of the Advisory Committee members were also present at all four workshops and have not been counted in the numbers below.

Old Mill (Gazebo) Park: 10 attendees

Aster Pass Park: 2 attendees

Hatch Pond: 5 attendees

Volente Hills Park and Cashell Wood Pond: 7 attendees

A few residents who were either unable to attend the workshops, or who thought of ideas after the fact, reached out separately with comments and ideas.

At each workshop, residents sat in small groups and each group was given a large (24x36) satellite map of the park (Google Earth image). Using stickers and markers, participants were asked to work with their group members to mark up their maps with thoughts and ideas. In two of the four workshops, where we had more than one group, a spokesperson from each group stood up to share their work with the other group(s).

To help facilitate group discussion, participants were each given a handout with guiding questions. There was space on each handout for individuals to jot down their own, personal responses to those questions, and many of the participants handed in their individual work at the end of the evening.

Compilation of Map Responses (Results of Group Work):





The Future of Aster Pass Park

- Problems & Challenges
- Ideas & Opportunities

Notes:

- Skate park
- Trees, plants, color
- Redo paths



WTC MUD No. 1
5-YEAR PARK PLAN



The Future of Hatch Pond

- Problems & Challenges
- Ideas & Opportunities

Notes:

- No dumping at the drain
- Stairs and ADA ramp
- Leave play fields
- Disability access to playground
- Able-bodied swings
- Tetherball-like
- Not crazy about gravel on trails



WTC MUD NO. 1
5-YEAR PARK PLAN



Individual Responses to Workshop Guiding Questions (collected only from those who recorded their own responses)

1. What makes this park special or valuable to you? What do you like about this park as it is today?

Old Mill (Gazebo) Park

- I like the green area to look at from my backyard and the view.
- Close by—my backyard. Peaceful, quiet place to spend time to think, walk the dog, or meet a friend.
- Quiet, well-shaded.
- Greenspace

Aster Pass Park

No individual responses collected.

Hatch Pond

- Kids' freedom to play.

- Open spaces.
- I live nearby and my kids grew up playing in it. I really like it the way it is now.

Cashell Wood Pond

- Yoga pad is not used for anything. Too close to the road.
- Pretty, but useless except to look at.

Volente Hills Park

- Small park, handy location, never busy.

2. What feature or amenity would get you to use this park at all/more often?

Old Mill (Gazebo) Park

- Gazebo—like to sit and read there.
- A few more benches; slower speed limit on that portion of Old Mill.
- Small play features.
- Better landscape maintenance

Aster Pass Park

No individual responses collected.

Hatch Pond

- Ramp, trees.
- More trees, stairs, and ADA Ramp.
- More trees, shading on walking trail.

Cashell Wood Pond

- Not sure how to use this space.

Volente Hills Park

- 1/2 basketball court, more toys—doesn't really matter what.

3. What would improve your experience at this park? What would make it safer, more comfortable, more enjoyable? No idea is too small.

Old Mill (Gazebo) Park

- One or two benches outside gazebo
- Better maintenance of the trees. Right now broken limbs are falling and can fall on us and/or on owner properties.
- Natural walkway to help prevent mud.

Aster Pass Park

No individual responses collected.

Hatch Pond

- Weed removal.
- Lighting in area around trees.

Cashell Wood Pond

- Beautify the space.
- Sun shade?

Volente Hills Park

- Tree trimming, retaining wall anchors are popping out.

4. If you could wave a magic wand and make this space into anything you wanted, what would that be?
- a. What would the space look like?
 - b. What would the space feel like?
 - c. How would the space be used?

Old Mill (Gazebo) Park

- The space is amazing already the way it is with a little more maintenance.
- Don't like the barrier fence idea or the community garden idea.
- A wall like all the other common areas around the side and rear of park, nicely groomed grass and shrubs, quieter traffic (by slowing it down).
- Add a walkway for mud and some benches or statues. Make Gazebo nicer.
- Well-groomed and maintained. Quiet.

Aster Pass Park

No individual responses collected.

Hatch Pond

- Wooded and clean.
- Trees and native plants, relaxing, families, kids.

Cashell Wood Pond

- Take out the yoga pad and beautify with garden, trees, shaded seating.

Volente Hills Park

No individual responses collected.

5. In what ways can changes to this park space contribute to the District's draft park system goals (listed below)?

Old Mill (Gazebo) Park

- Better maintenance.
- It supports 1, 3, 4, & 5.

Aster Pass Park

No individual responses collected.

Hatch Pond

No individual responses collected.

Cashell Wood Pond

No individual responses collected.

Volente Hills Park

No individual responses collected.

6. What do you think should be the role of residents (all of you) in adapting this space? The role of the District?

Old Mill (Gazebo) Park

- Use the park responsibly.
- Active role and vote on final park renovations.

Aster Pass Park

No individual responses collected.

Hatch Pond

- Volunteer workshops with residents.
- Keep this park for the neighborhood, please don't ask outside events to come to this park.

Cashell Wood Pond

No individual responses collected.

Volente Hills Park

No individual responses collected.

Other Individual Responses Collected (comments collected either in-person or through separate communications in connection to these workshops)

Old Mill (Gazebo)Park:

- I personally would love to see the gazebo stay (if it's in good enough condition) but add a few playhouses and a fence to make it more child friendly. We frequent most parks in this neighborhood and as fun as the playscapes are I would really love to see things that can help bring on more imaginative play like playhouses or boats.

Aster Pass Park

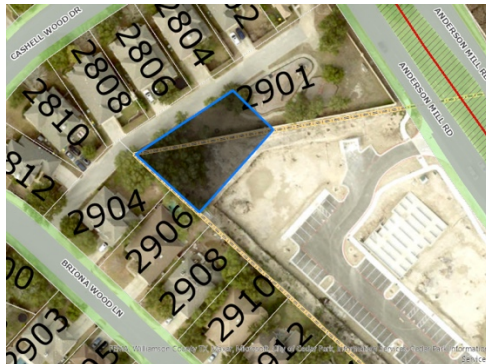
- Park benches to sit on. Maybe picnic table.
- Get rid of the landscaping of the cactus cacti. That is not good for little ones to play around.
- Better lighting in the evening.

Hatch Pond

No other comments collected.

Volente Hills Park

- The VH park is triangular shaped, which restricts the areas we have to work with. The office complex being developed nearby owns the complementary triangle, which is unusable for them as well. If we could purchase or lease the triangle from the office complex, the combined pieces would make a large usable new space. I think it's a long-term opportunity we should watch for.



Cashell Wood Pond

- Two or three benches along the path or patio.

Anderson Mill Pond (some residents offered input on this space--even though it was not formerly one of the parks being discussed—because it is interconnected with Cashell Wood Pond)

- 2 trees needed between trail and fence of 2700 Cashell Wood Cv to block currently unobstructed view into backyard and pool. Concerned about safety and privacy.
- Complete trail on east side of park.
- Bench to enjoy the view of the sunset
- Put mile markers so folks can track how many miles they walk.
- Almost too many picnic tables; add more playground, like ladder slide. Folks do not picnic there as there is no parking—who wants to carry food or party stuff that far.
- More gravel path around the water retention ponds.
- Exercise bars for push-up, pull-ups, or sit-ups like there are at Milburn Park